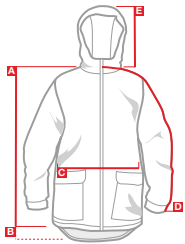


Chapter 05

Size charts men's



Hammer jacket

| MEASUREMENTS | S | M | L | XL |
|--------------------------|----|------|----|------|
| A FRONT LENGTH | 84 | 86 | 88 | 90 |
| B BACK LENGTH | 89 | 91 | 93 | 95 |
| C 1/2 WAIST WIDTH | 59 | 61,5 | 64 | 67 |
| D SLEEVE LENGTH | 94 | 96 | 98 | 100 |
| E HEIGHT OF HOOD | 40 | 40,5 | 41 | 41,5 |

Wizard jacket

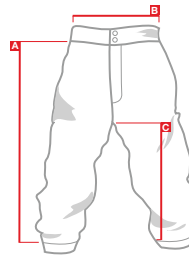
| MEASUREMENTS | S | M | L | XL |
|--------------------------|----|------|----|------|
| A FRONT LENGTH | 84 | 86 | 88 | 90 |
| B BACK LENGTH | 91 | 93 | 95 | 97 |
| C 1/2 WAIST WIDTH | 59 | 61,5 | 64 | 67 |
| D SLEEVE LENGTH | 94 | 96 | 98 | 100 |
| E HEIGHT OF HOOD | 40 | 40,5 | 41 | 41,5 |

Tailgunner jacket

| MEASUREMENTS | S | M | L | XL |
|--------------------------|----|------|----|------|
| A FRONT LENGTH | 84 | 86 | 88 | 90 |
| B BACK LENGTH | 91 | 93 | 95 | 97 |
| C 1/2 WAIST WIDTH | 59 | 61,5 | 64 | 67 |
| D SLEEVE LENGTH | 94 | 96 | 98 | 100 |
| E HEIGHT OF HOOD | 40 | 40,5 | 41 | 41,5 |

Streetfighter jacket

| MEASUREMENTS | S | M | L | XL |
|--------------------------|----|------|----|------|
| A FRONT LENGTH | 82 | 84 | 86 | 88 |
| B BACK LENGTH | 82 | 84 | 86 | 88 |
| C 1/2 WAIST WIDTH | 59 | 61,5 | 64 | 67 |
| D SLEEVE LENGTH | 92 | 94 | 96 | 98 |
| E HEIGHT OF HOOD | 40 | 40,5 | 41 | 41,5 |



Dissident pant

| MEASUREMENTS | S | M | L | XL |
|--------------------------|-------|------|-----|------|
| A SIDESEAM | 104,5 | 107 | 110 | 113 |
| B 1/2 WAIST WIDTH | 41,2 | 44,6 | 48 | 52,2 |
| C INSEAM | 74,3 | 75,9 | 78 | 79,9 |

Ballroom Blitz pant

| MEASUREMENTS | S | M | L | XL |
|--------------------------|-------|------|-----|------|
| A SIDESEAM | 104,5 | 107 | 110 | 113 |
| B 1/2 WAIST WIDTH | 39,2 | 42,6 | 46 | 50,2 |
| C INSEAM | 74,5 | 75,5 | 77 | 78,2 |